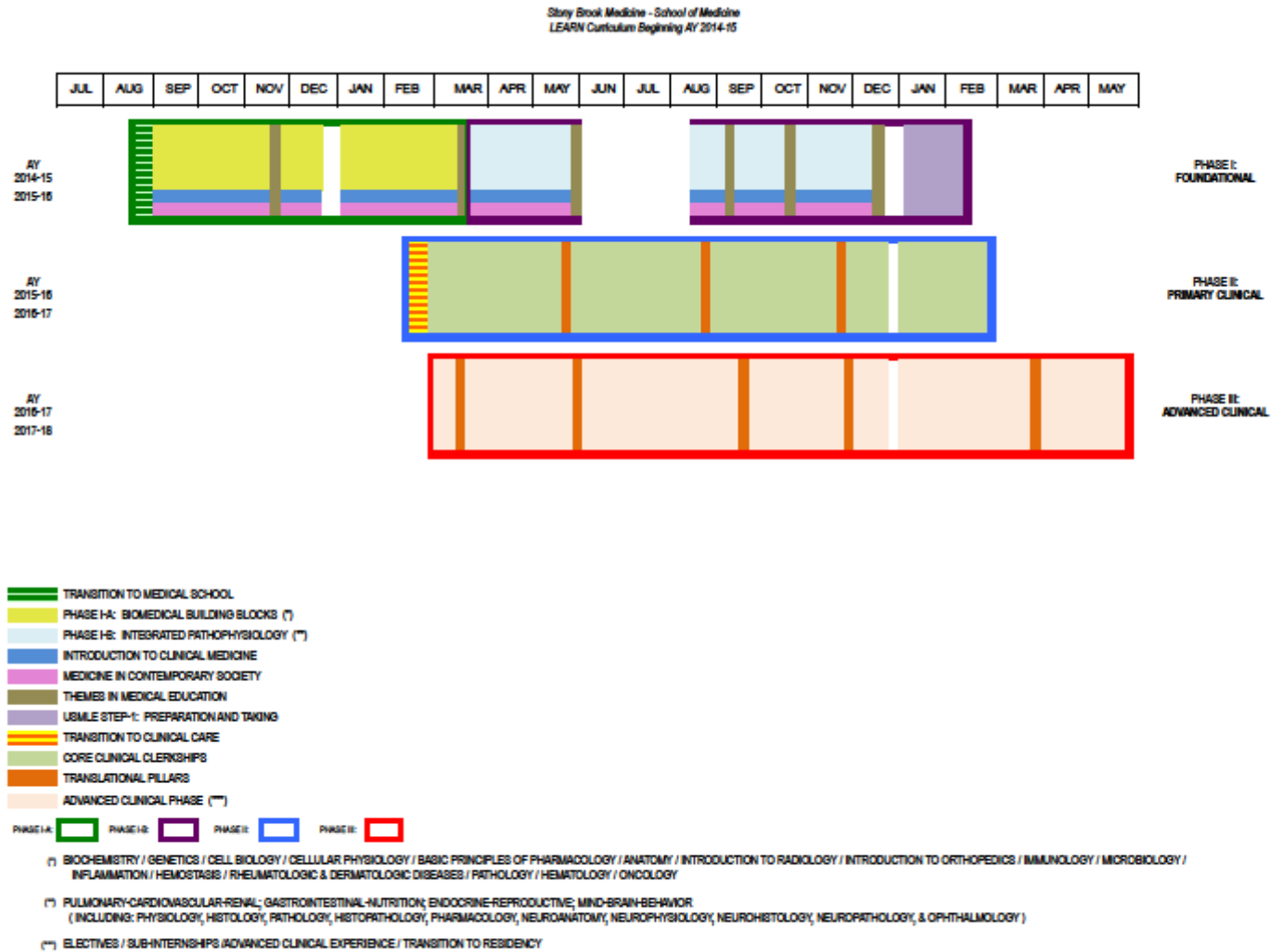
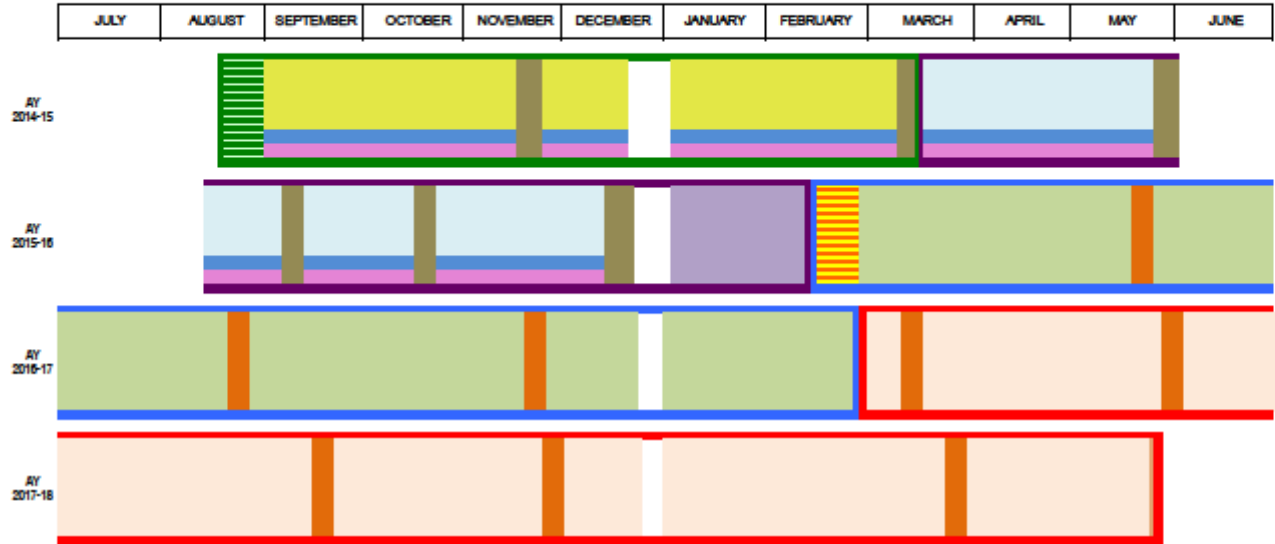


# 5. CURRICULUM COMMITTEE DECISIONS

The SOM curriculum committee voted on the **LEARN** curriculum proposal details in its November and December 2013 meetings. A specific schematic for the **LEARN** curriculum with three phases, and an assessment philosophy was adopted. Additionally, the subcommittee structure of the Curriculum Committee was reorganized to meet the needs of the new **LEARN** curriculum.

## Curriculum Schematic Phases I II III





- █ TRANSITION TO MEDICAL SCHOOL
- █ PHASE I-A: BIOMEDICAL BUILDING BLOCKS (\*)
- █ PHASE I-B: INTEGRATED PATHOPHYSIOLOGY (\*\*)
- █ INTRODUCTION TO CLINICAL MEDICINE
- █ MEDICINE IN CONTEMPORARY SOCIETY
- █ THEMES IN MEDICAL EDUCATION
- █ USMLE STEP-1: PREPARATION AND TAKING
- █ TRANSITION TO CLINICAL CARE
- █ CORE CLINICAL CLERKSHIPS
- █ TRANSLATIONAL PILLARS
- █ ADVANCED CLINICAL PHASE (\*\*\*)

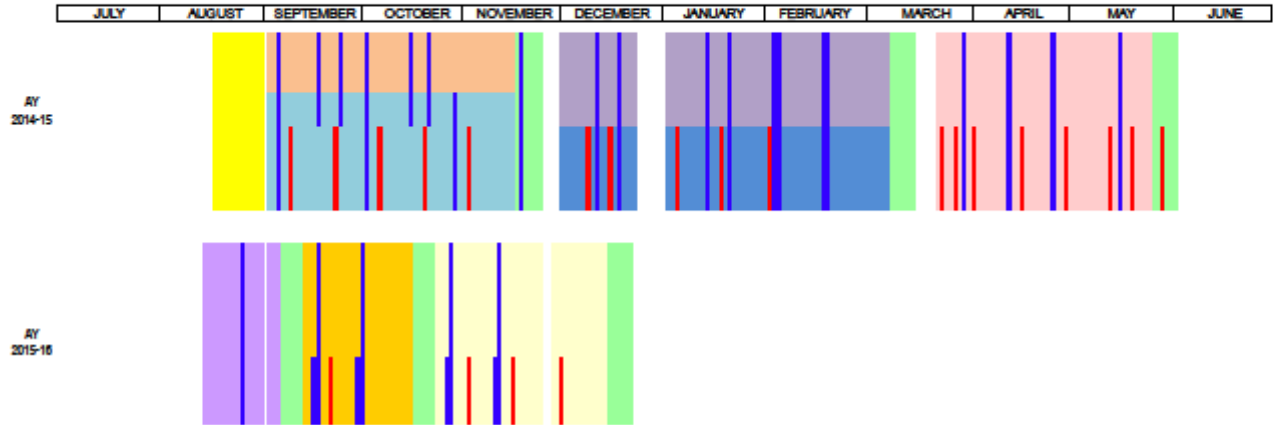
PHASE I-A: █ PHASE I-B: █ PHASE II: █ PHASE III: █

(\*) BIOCHEMISTRY / GENETICS / CELL BIOLOGY / CELLULAR PHYSIOLOGY / BASIC PRINCIPLES OF PHARMACOLOGY / ANATOMY / INTRODUCTION TO RADIOLOGY / INTRODUCTION TO ORTHOPEDICS / IMMUNOLOGY / MICROBIOLOGY / INFLAMMATION / HEMOSTASIS / RHEUMATOLOGIC & DERMATOLOGIC DISEASES / PATHOLOGY / HEMATOLOGY / ONCOLOGY

(\*\*) PULMONARY-CARDIOVASCULAR-RENAL; GASTROINTESTINAL-NUTRITION; ENDOCRINE-REPRODUCTIVE; MIND-BRAIN-BEHAVIOR (INCLUDING: PHYSIOLOGY, HISTOLOGY, PATHOLOGY, HISTOPATHOLOGY, PHARMACOLOGY, NEUROANATOMY, NEUROPHYSIOLOGY, NEUROHISTOLOGY, NEUROPATHOLOGY, & OPHTHALMOLOGY)

(\*\*\*) ELECTIVES / SUB-INTERNSHIPS / ADVANCED CLINICAL EXPERIENCE / TRANSITION TO RESIDENCY

PHASE I DETAILED VIEW



- ORIENTATION AND TRANSITION TO MEDICAL SCHOOL
- BIOCHEMISTRY / GENETICS / CELL BIOLOGY / CELLULAR PHYSIOLOGY / BASIC PRINCIPLES OF PHARMACOLOGY
- THE BODY (ANATOMY / INTRODUCTION TO RADIOLOGY / INTRODUCTION TO ORTHOPEDICS)
- PATHOGENS AND HOST DEFENSE (IMMUNOLOGY / MICROBIOLOGY / INFLAMMATION / HEMOSTASIS / RHEUMATOLOGIC & DERMATOLOGIC DISEASES)
- BASIC MECHANISMS OF DISEASE (PATHOLOGY / HEMATOLOGY / ONCOLOGY)
- INTEGRATED PATHOPHYSIOLOGY: PULMONARY, CARDIOVASCULAR, & RENAL (INCLUDING PHYSIOLOGY, HISTOLOGY, PATHOLOGY, HISTOPATHOLOGY, & PHARMACOLOGY)
- INTEGRATED PATHOPHYSIOLOGY: GASTROINTESTINAL & NUTRITION (INCLUDING PHYSIOLOGY, HISTOLOGY, PATHOLOGY, HISTOPATHOLOGY, & PHARMACOLOGY)
- INTEGRATED PATHOPHYSIOLOGY: ENDOCRINE & REPRODUCTIVE (INCLUDING PHYSIOLOGY, HISTOLOGY, PATHOLOGY, HISTOPATHOLOGY, & PHARMACOLOGY)
- INTEGRATED PATHOPHYSIOLOGY: MIND, BRAIN, & BEHAVIOR (INCLUDING NEUROANATOMY, NEUROPHYSIOLOGY, NEUROHISTOLOGY, NEUROPATHOLOGY, OPHTHALMOLOGY, & PHARMACOLOGY)
- INTRODUCTION TO CLINICAL MEDICINE
- MEDICINE IN CONTEMPORARY SOCIETY
- THEMES IN MEDICAL EDUCATION

## Typical Week in LEARN Curriculum

TYPICAL WEEK IN PHASE ONE OF THE LEARN CURRICULUM				
TIME	DAY			
	MONDAY	TUESDAY	WEDNESDAY	THURSDAY
9 A- 10 A	Lecture( Self or In class)			
10A-11A				
11A- 12 N	Small group			
12- 1 P	LUNCH/CLASS MEETINGS/NETWORKING/SOCIAL			
1-2 P	Lab/Small Group	ICM/MCS	Lab/Small Group	ICM/MCS
2-3 P				
3-4 P	SELF STUDY/ PREP for next day			
4-5 P				

## Typical TIME Week

TIME: Themes in Medical Education					
Block Format					
TIME	DAY				
	MONDAY	TUESDAY	WEDNESDAY	THURSDAY (1)	THURSDAY (2)
9 A- 10 A	Meet the Patient	TBL, content for all 5 themes & focus for week**	Teaching Family Case***	Written Reflection	6 teams Individual OSCE & related activity (soft exam content)
10A-11A					
11A- 12 N	Non Facilitated Groups, complete template*		Team Based Large Group, theme content learning	6 teams Facilitated Small Group	
12- 1 P	LUNCH/CLASS MEETINGS/NETWORKING/SOCIAL				
1-2 P	Large Group, clarify the issues	TED Talk/Guest Lecture			
2-3 P		Site Visit/Outside Organizations			
3-4 P	SELF STUDY/ Prep for next day				
4-5 P					
	*Template	Major issues of case for each of the 5 themes			
	**TBL	Case focused content			
	***Teaching Family Case	Theme content within case			